

Phys 115: Inquiry Into Physics	HW 8 revision, due Monday Nov. 5 th
Section 0201: Ayush Gupta	Please also email to ayush.courses@gmail.com

Hey all,

This week there is no new HW assignment, but I would expect you to do an exceptionally good job of the revision of HW 8.

- Read the HW 8 again to make sure that you are not leaving out any part of the question.
- Carefully examine the implications of each idea for what they mean for another circuit.
- When looking at the implications of an idea, do not worry about the actual observation; be focused on what the actual idea implies, not what it *should* imply.
- But after that, do see if the implications match observations or not; and if not, then think about what modifications or addition you could make to the idea so that the new implications and observations fit together.
- Critically examine all modification/addition to see what implications they have for the previous circuits.
- Remember, its okay to sometimes have pieces that don't quite fit together; but a good scientist is aware of these mismatches and honest about them; in time, and with effort often further modifications or new ideas make for a more coherent picture (even if it takes a few decades and many scientists)
- And finally, do the same steps (implications of previous ideas, observation, modification/addition, and re-examining previous observations) for the following circuit that you have seen previously:

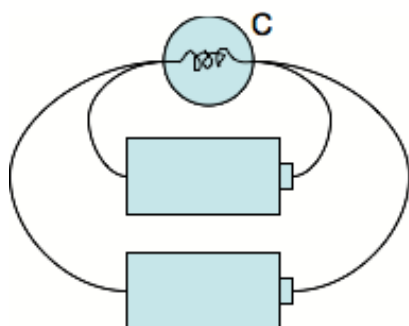


Figure 5: 1 bulb; 2 Battery-independent