

**Homework 1**

11.59 pm, September 22

**Question 1: 10 points**

Classify each of the structures as statically determinate, statically indeterminate, stable or unstable. For those cases that are indeterminate, specify the degree of indeterminacy.

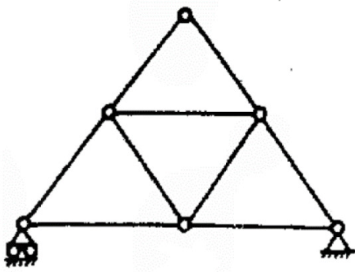


Figure 1:

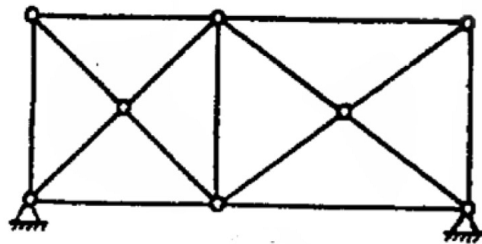


Figure 2:

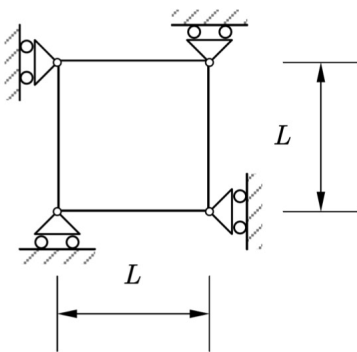


Figure 3:

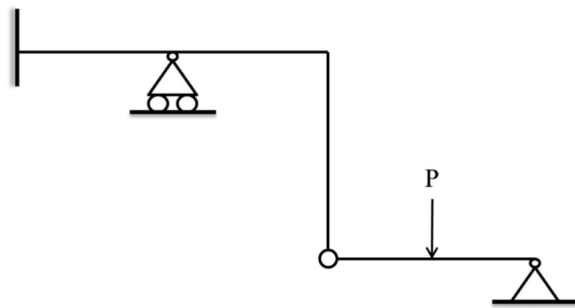


Figure 4:

**Question 2: 10 points**

Determine the reactions on the structures below.

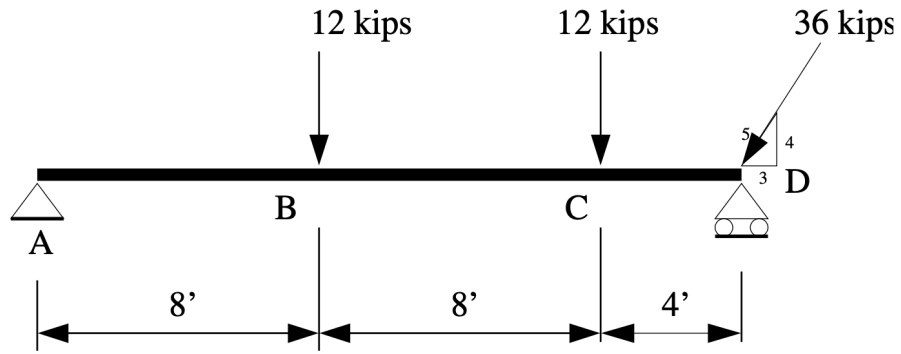


Figure 5: Problem 2 (a)

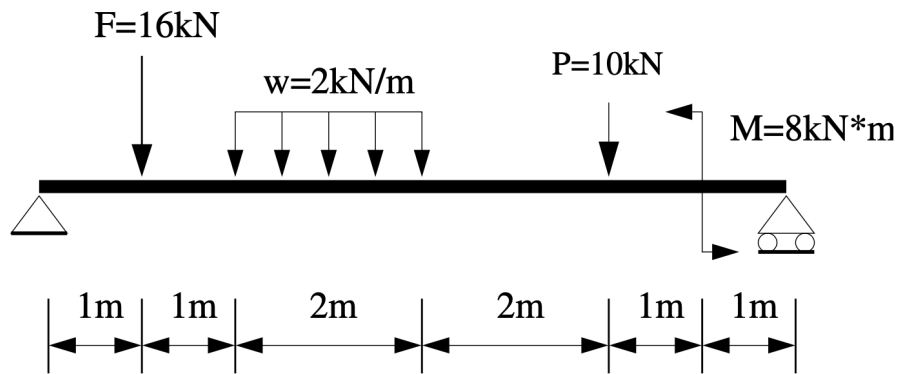


Figure 6: Problem 2 (b)