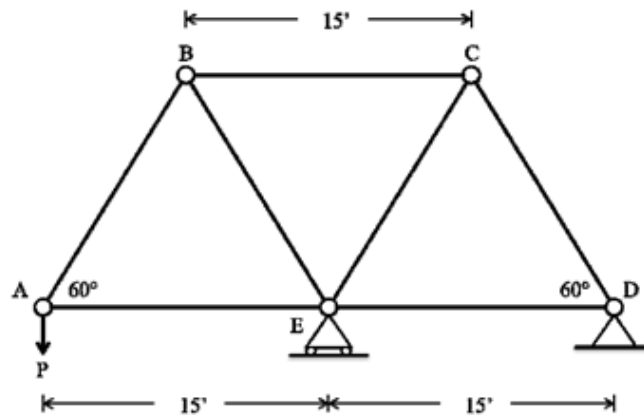
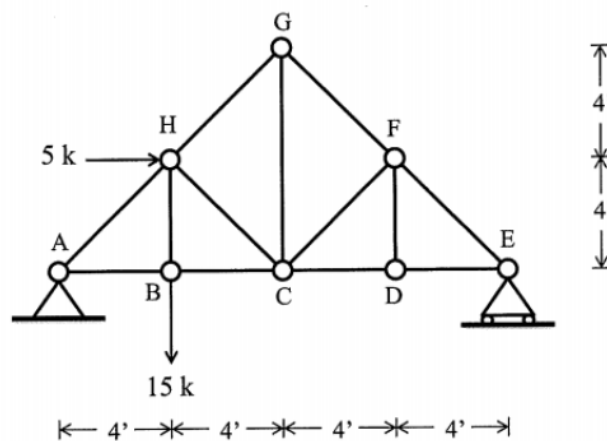


**HOMEWORK 2**(Due: 2<sup>nd</sup> October, 2020)**Problem 1: 10 points**

If the maximum force that any member can support is 8 kips in tension and 5 kips in compression, determine the maximum force  $P$  that can be supported at joint A

**Problem 2: 5 points**

- Determine all zero-force members.
- Determine forces in members BC, CH, GH. State whether forces are in tension or compression.

**Question 3: 5 points**

Using method of sections, determine the forces in member  $BC$ ,  $FC$  and  $FG$ , and state if the members are in tension or compression.

