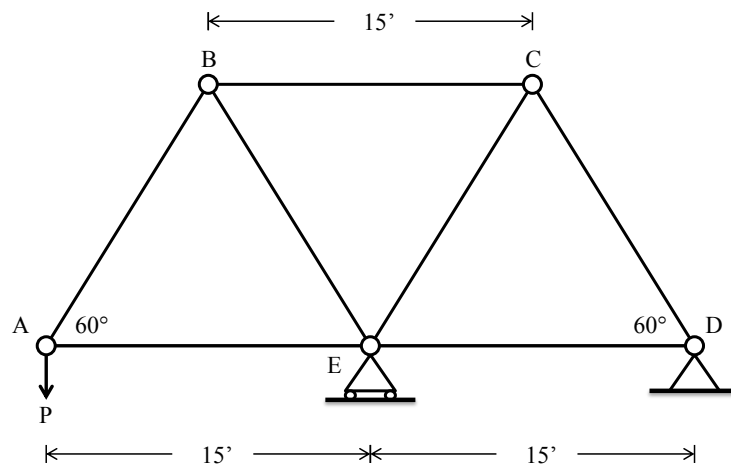


## Homework #2

Note: Draw free body diagrams and show all work for each problem

### Problem 1

If the maximum force that any member can support is 8 kips in tension and 5 kips in compression, determine the maximum force  $P$  that can be supported at joint A



### Problem 2

Using *method of sections*, determine the forces in members A, B, and C. State if the members are in tension or compression

