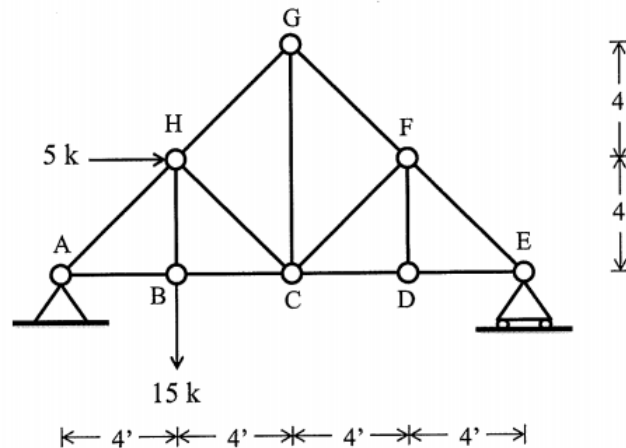


Homework #2

Note: Make sure to draw Free Body Diagrams for each problem.

Problem 1:



- Determine all zero-force members.
- Determine forces in members BC, CH, GH. State whether forces are in tension or compression.

Problem 2: If the maximum force that any member can support is 8 kN in tension and 6 kN in compression, determine the maximum force P that can be supported at joint D.

